

Arkansas Maps

www.arkansastimber.info
Assembled by: Colleen Morphey

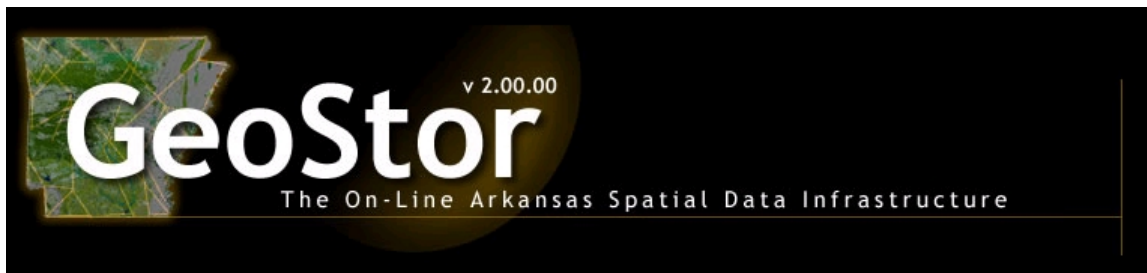
Aerial photographs and topographic maps of Arkansas are available on the web as follows:

- 1) DOQQ color infrared for 2000 to 2002 aerial photographs.
- 2) 1:24,000 DRG topographic data files.

There are three web sites available in Arkansas for downloading and obtaining maps as follows:

1. **GeoStor** - http://www.cast.uark.edu/cast/geostor/raw_DOQ/index.html
2. **Spatial Analysis Laboratory** – http://sal.uamont.edu/pages/nsdd/Arkansas_State.htm
3. **Custom Designed Maps** – http://reynoldsforestry.com/reynolds_forestry_consulting_map.htm

The above sites are overviewed below:



1) **GeoStor** – www.cast.uark.edu/cast/geostor/

GeoStor provides a multitude of data listings for the entire state of Arkansas. RAW and MrSID compressed DOQQs are now available for download through an easy FTP-able format download. After you have selected the type of DOQQ (i.e. [DOQQ in color infrared for 2000 - 2002](#) in TIF format) a directory listing the files under alphabetical directories will open in a new browser window. Select the alpha directory of choice, and then navigate to a file. Images for the raw and compressed versions are listed by their Quad names - followed by NW, NE, etc.

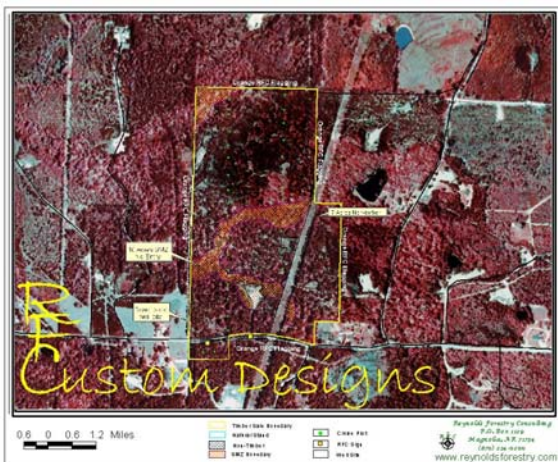
The name Geostor refers to a comprehensive, web-based geodata delivery system. At the core of this system is a massive (two terabyte) Oracle database containing all publicly available geodata for the state of Arkansas. This geographic data is placed in an Oracle Enterprise Spatial Database running on a Sun Microsystems 4500 Enterprise class server and supporting Ultra Enterprise 450s and Windows 2000 servers. The geographic and attribute components of each feature (e.g. "highway 1") are stored as an object in the database. The data are indexed using a quadtree index that provides fast access. Access to this data from the World Wide Web is accomplished via a variety of peripheral mechanisms.



2) Spatial Analysis Laboratory – <http://sal.uamont.edu/>

The Spatial Analysis Laboratory (SAL) and the Natural State Digital Database (NSDD), has been providing geo-technology expertise and data to Arkansas and the nation since 1994. The Natural State Digital Database (NSDD) was developed by the Spatial Analysis Laboratory to serve the GIS user community and the state of Arkansas. This web site is a reality because of the work of the SAL, along with other people in the state who feel there should be a site in Arkansas to obtain free base GIS data.

The SAL provides an avenue through which the expertise of the faculty and the natural resource community can be integrated with new technology to develop solutions to current and future problems that face natural resource managers. These efforts will make natural resource managers better able to compete economically, address a changing social climate, and meet natural resource demands in the 21st century.



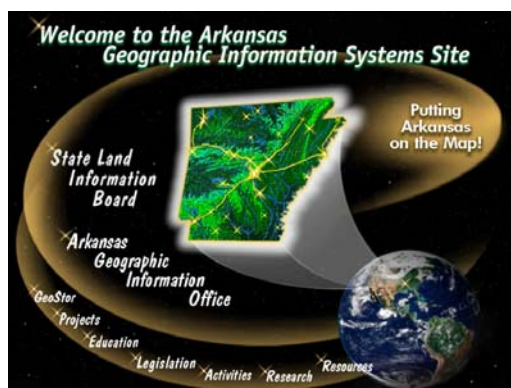
3) Custom Designed Maps – www.reynoldsforestry.com (refer to “Custom Maps”)

This service was specially created for landowners who might not have the time, computer savvy or software to download and create their own maps. Simply provide your legal description by email, fax, or mail with your specific map request. Property boundaries are then overlaid on infrared aerials and/or topographic maps and delivered to you by “jpg” format through email and/or hard copy by regular mail. This is a paid service.

The following websites are links to more Geographic Information Systems (GIS):

- 1) **Geographic Information System Site** – www.gis.state.ar.us/defaultIE.htm
- 2) **Arkansas GIS User's Forum** – <http://argis.ualr.edu/forum/>
- 3) **The Arkansas Economic Atlas Program** – www.cast.uark.edu/cast/econ_dev/
- 4) **UALR GIS Applications Laboratory** – <http://argis.ualr.edu>

The above sites are overviewed below:



- 1) **Geographic Information System Site** – www.gis.state.ar.us/defaultIE.htm

This site serves as your information resource Center for GIS activities in the state of Arkansas. It is supported by the State Land Information Board and the Arkansas Geographic Information Office.



- 2) **Arkansas GIS User's Forum** – <http://argis.ualr.edu/forum/>

In 1990, a dozen federal, state, and municipal GIS users came together to establish a base from which to discuss and resolve issues looming on the GIS horizon. That turned out to be a fairly lofty goal, and through that effort the *Arkansas GIS Users Forum* emerged within the year.

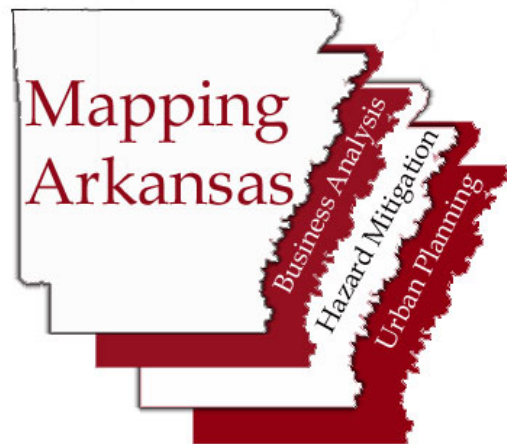
This forum is a volunteer organization that addresses the complex issues surrounding our chosen field, GIS (Geographic Information Science). Part of our function includes the standardization and sharing of

data, with the ultimate goal of cost reduction. This group includes those from our state and the surrounding area who are developing, using or otherwise interacting with GIS software. We encourage discussion and problem solving at a broad level.



3) The Arkansas Economic Atlas Program – www.cast.uark.edu/cast/econ_dev/

The Federal Geographic Committee funded this prototype web project to demonstrate how geospatial analysis with existing “framework” GIS data can support economic development decisions.



4) UALR GIS Applications Laboratory – <http://argis.ualr.edu>

To provide demographic, environmental, marketing and socioeconomic data through the development of geopolitical databases and applications of geographic information and spatial analysis systems. In pursuit of this mission, this facility assists businesses, governmental agencies and educational institutions throughout Arkansas with training, database resources and problem resolution.